

# Human life is unlimited – but short

Holger Rootzén\* and Dmitrii Zhodud†

## Abstract

Does the human lifespan have an impenetrable biological upper limit which ultimately will stop further increase in life lengths? This question is important for understanding aging, and for society, and has led to intense controversies. Demographic data for humans has been interpreted as showing existence of a limit, or even as an indication of a decreasing limit, but also as evidence that a limit does not exist. This paper studies what can be inferred from data about human mortality at extreme age. We find that in western countries and Japan and after age 110 the risk of dying is constant and is about 47% per year. Hence data does not support that there is a finite upper limit to the human lifespan. Still, given the present stage of biotechnology, it is unlikely that during the next 25 years anyone will live longer than 128 years in these countries. Data, remarkably, shows no difference in mortality after age 110 between sexes, between ages, or between different lifestyles or genetic backgrounds. These results, and the analysis methods developed in this paper, can help testing biological theories of aging and aid confirmation of success of efforts to find a cure for aging.

**Keywords:** Extreme human life lengths; Survival at extreme age; Limit for human life span; Jeanne Calment; Supercentenarians; International database on longevity; IDL; Gereontology research group; GRG; No influence of lifestyle or genetic background on survival at extreme age; Future record ages; Force of mortality; LATool.

## 1 Does the human lifespan have a finite limit?

Inferences about mortality at extreme age crucially depend on the quality of data, and on analysis respecting the way data has been collected. Bad data or wrong analysis can, and has, led to misleading conclusions, and also good analyses become outdated when more informative data is collected. Conclusions about a limit for the human lifespan are only meaningful if they are accompanied by a clear definition of the concept of a limit for the random variation of lifespans of individuals. They have led to intense controversies (Couzin-Frankel, 2011).

A recent Nature Letter, Dong et al. (2016), claims that “the maximum lifespan of humans is fixed and subject to natural constraints”. The claim rests on plots showing that the rate of improvement in survival is slower at very high ages; the observation that annual average age at death of supercentenarians (humans who are more than 110 years old) has not changed; and on analysis of the yearly highest to the fifth highest reported age at death. However, a slower rate of improvement is still an improvement, and, if anything, it contradicts the existence of a limit. Further, record age will increase as more supercentenarians are observed, even if the distribution of their life lengths does not change. Finally, the analysis of the yearly highest reported ages of death made in the letter is misleading. Thus the conclusion in Dong et al. (2016) is unfounded and is based on inappropriate use of statistics. Additional details are given in Section 4.

---

\**Department of Mathematical Statistics*

*Chalmers University of Technology and University of Göteborg, Sweden.*

E-mail: hrootzen@chalmers.se

†*Department of Mathematical Statistics*

*Chalmers University of Technology and University of Göteborg, Sweden.*

E-mail: dmitrii@chalmers.se

A similar claim that there is a “biologic barrier limiting further life-span progression” is made in Antero-Jacquemin et al. (2014). The claim is based on analysis methods which do not distinguish between a finite and an infinite limit, which do not take truncation caused by sampling scheme into account (see discussion below), and which sometimes exclude the most extreme life lengths from analysis. Neither of the papers Dong et al. (2016) or Antero-Jacquemin et al. (2014) define the concept of a limit for the human lifespan.

Earlier papers, Weon and Je (2009), Aarssen and de Haan (1994), Wilmoth et al. (2000), argue both for and against a limit for the human lifespan. The arguments are based on analysis of data from the Netherlands or Sweden with maximum recorded ages 112 years or less. Extrapolation to conclusions about the existence, or not, of a limit of 122.45 or more years, the age of the longest living documented human, Jeanne Calment, is long, and thus uncertain.

In a careful analysis Gampe (2010) studies survival after age 110 using nonparametric EM estimates in a life-table setting. Her results agree with the present paper and hence, specifically, provide important confirmation that the parametric models we use are appropriate. However our parametric approach makes a much more detailed analysis possible, and, in particular, addresses the question of a limit for the human lifespan; make predictions about future record ages possible; and makes it possible to perform tests and to obtain reasonable confidence intervals. There is some consensus that “the notion of an intractable species-specific senescent death and species-specific maximum lifespan” has been refuted (Vaupel, 2010).

To summarize, the question if there is a limit to the human lifespan still has not received any convincing answer. In this paper we use the best available data, the International Database on Longevity (IDL, 2016) to give the currently best possible answer to the question, and to study how factors such as gender, age, lifestyle, or genetic background change - or do not change - human mortality at extreme age. We use statistical Extreme Value Theory which is the appropriate statistical framework for studying extreme ages.

Unvalidated data on ages of supercentenarians is known to be completely unreliable (Poulain, 2010). The IDL database contains validated life lengths of 668 supercentenarians from 15 countries, with “data collection performed in such a way that age-ascertainment bias is avoided”. This means that validation was performed with equal effort for younger and older supercentenarians. The only other data on validated lifespans of supercentenarians, theGRG (2016) list, does not have a clearly specified plan for data collection, and is expected to be agebiased.

The sampling scheme in the IDL database is somewhat different for different countries, but typically IDL contains ages of persons who died in some time interval, say 1980 – 1999, at age exceeding 110 years. The time intervals are different for different countries. This sampling scheme leads to both left and right truncation of life lengths. The analysis in this paper throughout takes this truncation into account; for details see Section 3.3. This is important: analysis which does not do this properly would lead to crucially different results.

Extreme value statistics provides methods for analysis of the most extreme parts of data: extreme floods, extreme winds, extreme financial events – or extreme life lengths, here excess life length after age 110. The generalized Pareto (GP) distributions play the same role for analysis of extreme excesses as the Gaussian distribution does in other parts of statistics (Coles, 2001, Beirlant et al., 2004). The exponential distribution is the most important GP distribution. It has the “lack of memory property”: if, e.g., excess life length has an exponential distribution, then also excess life length after a higher age and conditional on survival has the same exponential distribution. In particular this makes it the default distribution in reliability theory.

We summarize the main results of the analysis in Section 2. Details on data and statistical analysis are given in Section 3, and comments on the Dong et al. (2016) paper in Section 4. Section 5 contains a concluding discussion.

## 2 The human lifespan is unbounded, but short

Our aim is to estimate the “force of mortality” at extreme age. The force of mortality, or hazard rate, is the instantaneous rate of mortality so that, e.g., (assuming the measurement unit is year) the probability of dying tomorrow is  $1/365$  times the force of mortality today. Formally, the force of mortality equals minus the derivative of the log survival function (here again with survival measured in years). We model excess life length (life length minus 110 years) of supercentenarians with a GP distribution. The GP model includes three different cases with distinct behaviors of the force of mortality. In the first case there is a finite age at which the force of mortality tends to infinity and beyond which survival is not possible – in this case lifespans have a finite limit; in the second case the force of mortality is constant – life is unlimited but short (more precisely, survival after age 110 is short); and in the third case the force of mortality decreases with age – life is unlimited. In the second case excess life length has an exponential distribution. The three cases are illustrated in Fig. 1. Additionally, Fig. 1 shows the importance of taking truncation caused by the sampling scheme into account.

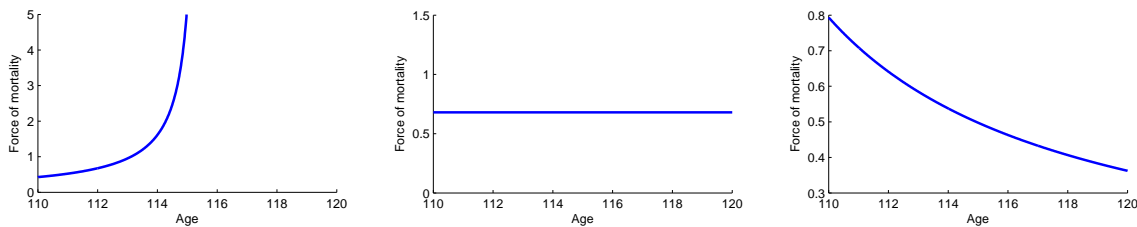


Figure 1: *Left*: GP distribution fitted to IDL data for Japan, without taking truncation into account. Life appears to have a finite limit equal to 116.0 years. *Middle*: Exponential distribution fitted to all IDL data with validation level A, with truncation taken into account. Life is unlimited but short. *Right*: GP distribution fitted to IDL data for France, without truncation taken into account. Life appears to be unlimited. However, changing estimation for Japan and France so that truncation is taken into account leads to the conclusion that, in fact, also in these countries life is unlimited but short.

Around 10 times as many women as men live to age 110 years. Nevertheless, likelihood ratio tests using the assumption of a GP distribution, or assuming an exponential distribution, show that differences in mortality, if any, between women and men after age 110 are too small to be detectable from the IDL data. Further, the age bias in the GRG data does not affect the null hypothesis of no difference between women and men, and in fact a GP distribution based test for the GRG data also did not reject this null hypothesis. For the full results, see Table 2.

Likelihood ratio tests also did not detect any difference in survival of supercentenarians between south and north Europe, between western Europe and north America, or between Japan and the other countries. Wald tests did not identify any differences in mortality above age 110 for earlier and later parts of the data, and likelihood ratio tests did not reject the hypothesis that survival after age 110 has an exponential distribution.

Thus, our conclusion is that in western Europe, north America, and Japan excess human life length after age 110 follows an exponential distribution – human life is unlimited, but short – and that survival is the same for women and men, during earlier periods and later ones, and in countries with very different lifestyles and genetic compositions. The mean of the exponential distribution was estimated to be 1.34 with 95% confidence interval (1.22, 1.46). Survival after 110 in these countries can hence be described as follows: each year a coin is tossed, and if heads comes up it means a person will live one more year; more precisely, the estimated probability to survive one more year is 47%, with 95% confidence interval (0.44, 0.50).

The number of persons who live longer than 110 years is rapidly increasing (Fig. 2). Still, it is a very extreme event that a woman will live 110 years: the probability is only about 2 out of 100,000. For a man this probability is ten times smaller. Given an unchanged mortality after age 110 and a continued increase in the number of supercentenarians, it is likely that the record age which will be documented in western Europe, north America or Japan during the coming 25 years will exceed 119 years but will be shorter than 128 years (Fig. 3). If the record falls outside this interval, it would be an indication that survival has changed.

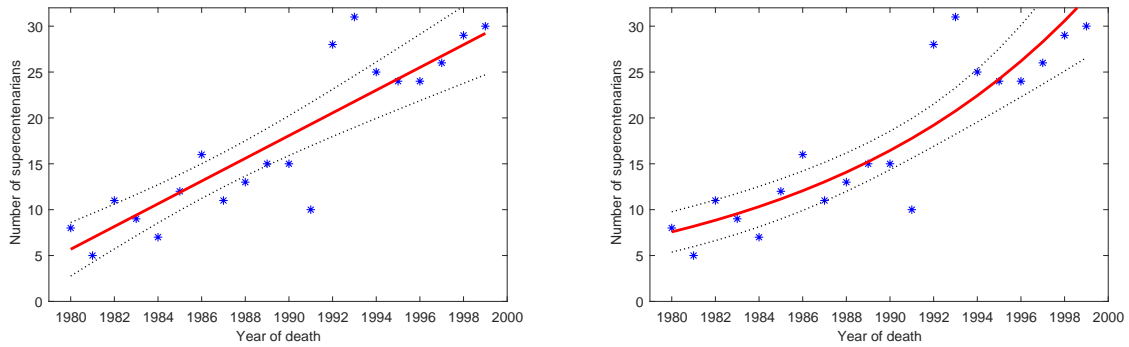


Figure 2: Yearly number of deaths of validated supercentenarians from England and Wales, Italy, and USA. Line and 95% confidence interval for the means are computed using Poisson regression with *Left*: identity link *Right*: log link.

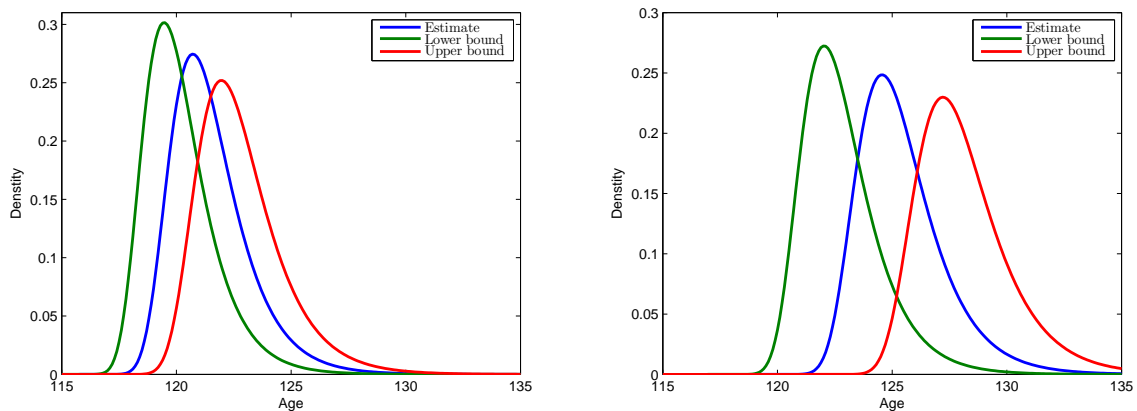


Figure 3: Probability density for record life length during 2018-2042 moves left if parameter  $\sigma$  of exponential distribution, or the number of deaths of supercentenarians ( $n$ ), are decreased, and to the right if they are increased. Plots show estimated density of record life length (blue) together with lower (green) and upper (red) bounding densities obtained by setting  $\sigma$  and  $n$  equal to the lower or upper bounds in their confidence intervals. Parameter  $n$  is estimated using Poisson regression with *Left*: identity link *Right*: log link. Further details are given in Section 3.2.

Jeanne Calment lived 3.18 years longer than the second longest-living person in the IDL data, which seems extreme, and could indicate that she is an “outlier”. Her life length is the longest of the 566 supercentenarians with validation level A, and the probability that the largest of 566 exponential variables with mean 1.34 is larger than 12.45 (her excess life length, 122.45 – 110 years) is 5%. Thus there is some evidence that her life length is close to being an outlier – or that, alternatively, mortality decreases at extremely high age, say after age 118.

### 3 Materials and Methods

#### 3.1 International database on longevity

The IDL (2016) database contains validated supercentenarian life lengths from 15 countries. The inclusion criterion typically is that the death has occurred in a specified time interval, however with different time intervals for different countries, and with somewhat more complicated criteria for USA and Japan. There are two validation levels, A and B, where level A signifies the most thorough validation.

In the analysis of the IDL data we only used the 566 life lengths with validation level A, and countries were grouped geographically, and so that groups contain 64 or more supercentenarians, see Table 1. The grouping was mandated by the fact that data from several countries included too few supercentenarians to make it meaningful to analyze these countries separately.

Table 1: Data sets used in the analysis. For IDL data, persons with validation level B, or who died after December 31, 1999, in USA, or died after August 31, 2004, in Japan, are excluded.

ID	Consists of	Women	Men
North Europe	Denmark, Germany, England and Wales	79	5
South Europe	Italy, France, Spain	97	17
Europe	North and south Europe	176	22
North America	USA, Quebec	272	28
Japan	Japan	55	9
Europe&America	Australia, Europe, north America,	452	50
World	Europe&America, Japan	507	59
GRG	Any country	319	27

We excluded persons who died in the USA after December 31, 1999, and persons who died in Japan after August 31, 2004; see Section 3.3 below. In the sequel we, for brevity, just write “Europe&America” for the data set which contains countries from western Europe, north America, and Australia, and “World” for the entire data set. To investigate the possibility of time trends in mortality of supercentenarians the data sets were split into two parts according to year of death. Except for World, the division was made so that the second part included more persons than the first one, but with the difference between the number of persons in the parts as small as possible.

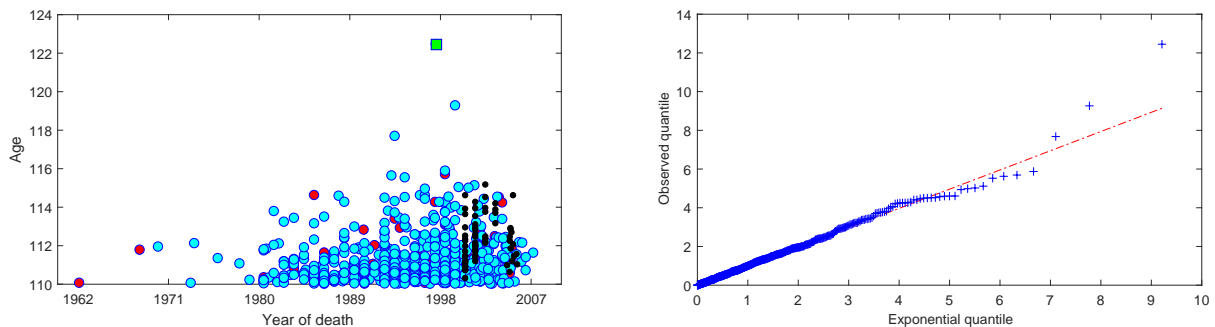


Figure 4: IDL data with validation level A, from “World”. *Left*: Life lengths against year of death: blue women, red men, black persons who died after December 31, 1999 in USA or after August 31, 2004 in Japan and which are not included in analyses. Green square is Jeanne Calment. *Right*: Empirical quantiles plotted against quantiles of exponential distribution with the estimated mean. For an impression of the statistical variation of such plots, see Fig. 5.

Including the 32 persons in countries validated at level B (Belgium, Finland, Norway, Sweden, Switzerland) in the analysis did not change conclusions. We also did the analyses reported below for life lengths in excess of higher age thresholds: 110.5, 111, 111.5, and 112 years. This did not change any of the conclusions, although estimates of course were somewhat different, and confidence intervals were wider for higher thresholds. The estimates and tests which result if one includes validation level B data and/or uses higher thresholds can be obtained from the MATLAB toolbox [LATool](#) which we have developed and which is available as Supplementary Material. Similarly, removing the largest age, Jeanne Calments age, from the data did not change conclusions.

### 3.2 Statistical analysis

The GP distribution has cumulative distribution function  $G(x) = 1 - (1 + \gamma x/\sigma)_+^{-1/\gamma}$  and force of mortality function  $(1 + \gamma x/\sigma)_+^{-1}/\sigma$ , where  $_+$  signifies that the expression in parentheses should be replaced by zero if it is negative. Here  $\gamma$  is a shape parameter, termed the extreme value index, and  $\sigma$  is a scale parameter. The three different cases, limited life length, unlimited but short life length, and unlimited life length, correspond to  $\gamma < 0$ ,  $\gamma = 0$  and  $\gamma > 0$ , respectively.

The statistical analyses were done using [LATool](#), the MATLAB toolbox which is available as Supplementary Material. The toolbox uses maximum likelihood estimation which takes the truncation caused by the sampling scheme into account, see Section 3.3. Confidence intervals were computed using asymptotic normality.

The aim was to select the simplest possible model which describes data well. A starting point was the non-parametric analysis of Gampe (2010) which concluded that “The analysis confirms that human mortality after age 110 is at a level corresponding to an annual probability of death of 50%. No sex-specific differences in mortality could be found, and no time trend in supercentenarian mortality between earlier and later cohorts could be detected”.

The last lines in Tables 2, 3, and 5 and the two last lines in Table 4 corresponds to a stepwise forward variable selection procedure in multiple regression, starting with the corresponding parametric model that excess lifetimes do not depend on any of the background factors and follow an exponential distribution, or alternatively, a GP distribution. The remaining tests in Tables 2 - 5 concern further hypotheses of substantive interest. As additional checks we have also, again in parallel to stepwise forward selection, tested each country or group of countries in Tables 2 and 4 against the rest world instead of against neighboring countries. The resulting p-values (not reported here) were similar to the ones in Tables 2 and 4. Finally, using the AIC model selection criterion also led to the same final model as the tests do.

The two sets of p-values in Tables 2 and 4 correspond to the two possible testing strategies: first test using the GP distribution, and then in the end test for  $\gamma = 0$ , i.e., for an exponential distribution, or conversely, start with testing for an exponential distribution and then do the other tests assuming an exponential distribution. Both strategies led to the same conclusions.

The problem of model selection in statistics has so far not received any final resolution. Issues with commonly using testing procedures, such as the one in this paper, include multiple testing problems and the so-called pretesting problem (Danilova and Magnus, 2004). Pretesting estimation means that, say, means and variances of parameters should be estimated conditional on previous model selection testing. However, not correcting for multiple testing makes it more likely to find significant effects, and we still did not find any such effects, so this issue only strengthens our conclusions. Further, since we didn't find any significant factors, the pretest problem is not relevant for our analysis.

An alternative view of our procedure is as model checks on our starting exponential model. For a discussion of questions related to this, see Mayo and Cox (2006).

For exponentially distributed life lengths the probability to survive one more year is  $e^{-1/\sigma}$ . Inserting the estimate and confidence limits for  $\sigma$  into this formula gives the estimate and confidence interval for the yearly survival probability.

The maximum, or record,  $M_n$ , of  $n$  exponential random variables with parameter  $\sigma$  has cumulative distribution function  $(1 - e^{-x/\sigma})^n$  and probability density function  $ne^{-x/\sigma}(1 - e^{-x/\sigma})^{n-1}/\sigma$ . Hence, to predict the size of the record age in some time period both the value of  $\sigma$  (estimated above) and the value of  $n$ , the number of supercentenarians who will die in the period, is needed.

To estimate the trend in the number of supercentenarians using data from different countries, the data must cover the same time period. Such data is available for supercentenarians who died in the time period 1980-1999, for the countries Italy, England and Wales, and USA. Using Poisson regression with linear link function, the expected number of supercentenarians who will die in these three countries during the next 25 years, i.e. in 2018-2042, was estimated to be 1,690 with a 95% confidence interval (1,326, 2,054).

The ratio of the number of persons aged 100-104 in north America, western Europe and Japan<sup>1</sup> in the year 2000 in the Human Mortality Database (HMD, 2016) to the same number for Italy, England and Wales, and USA is 1.76. We used this ratio, 1.76, as a proxy for the relative number of deaths of supercentenarians in these countries. Multiplying the estimate and confidence interval with 1.76 gave the estimate  $n = 2,974$ , with confidence interval (2,334, 3,615), for the expected number of supercentenarians who will die in the period 2018-2042 in north America, western Europe and Japan. Assuming independence of this interval and the 95% confidence interval for  $\sigma$  gives a joint confidence level 90%.

The same computations using a log link (i.e. assuming an exponential growth of the number of supercentenarians) in the Poisson regression gave the estimate  $n = 18,717$  with confidence interval (7,429, 46,962) obtained by simulating parameter values from the limiting normal distribution. It may be noted that these predictions only depend on changes in survival up to age 110 and are not affected by future fluctuations in birth rates: all supercentenarians who will die in the interval 1918-1942 are already born.

Inserting  $x = \text{age} - 110$  and the estimates  $\sigma = 1.34, n = 2,974$  into the formula for the probability density function for the record gives the blue graph in Fig. 3, left panel. Instead using the lower confidence interval bounds  $\sigma = 1.22, n = 2,334$  gives a lower bound probability density function: this is the green graph in Fig. 3, left. The upper bound, and the graphs in Fig. 3, right, are computed similarly.

Using the formula for the cumulative distribution function of record age and the identity link estimate of  $n$  gives the estimate 3% for the probability that the record age is lower than 119. Instead inserting the lower bounds of the confidence intervals into the formula gives the upper bound estimate 23% of the probability. Similar computations, using the log link estimate of  $n$  gives the estimate 3% for the probability that the record age exceeds 128 years, and the upper bound 19% for this probability. This shows that it is likely that the record age will fall in the interval 119-128 years. These results are obtained assuming that present mortality and growth of number of supercentenarians remain unchanged.

There are only 9 persons in the World data set who lived longer than 115 years, and hence little data to confirm an exponential distribution beyond this age. Still these 9 data points are in agreement with an exponential distribution (Fig. 4). In view of predictions of very rapid growth of the number of centenarians (Thatcher, 2010), the results based on the exponential regression for  $n$  may capture the most likely development.

In the computations above we, for simplicity of exposition, used the expected rather than actual, random, number of supercentenarians. However, assuming a Poisson distribution with mean  $n$  for the

---

<sup>1</sup>Austria, Canada, Denmark, Belgium, France, Finland, Iceland, Ireland, Italy, Japan, the Netherlands, Norway, Portugal, Spain, Sweden, UK, USA,

number  $N$  of supercentenarians who die in 2018-2042, the distribution of the record age is

$$\begin{aligned} P(M_N \leq x) &= E(P(M_N \leq x|N)) = E\left((1 - e^{-x/\sigma})^N\right) \\ &= e^{n\{(1-e^{-x/\sigma})-1\}} = e^{-ne^{-x/\sigma}}. \end{aligned}$$

It can be seen from numerical computation that for the parameter values used above the difference between this expression and  $(1 - e^{-x/\sigma})^n$  is less than one unit in the second decimal. The same holds for the densities obtained by differentiation of the two formulas.

### 3.3 The IDL sampling scheme: left and right truncation

The two exponential qq-plots in Figure 5 are quite different, and illustrate that the sampling scheme has to be taken into account in the analysis. Specifically, the explanation of the difference between the plots is not that US mortality changed at the end of 1999, but instead that the sampling schemes for the 1980-1999 data and the 2000-2003 data were different. The 1980-1999 data consists of ages of supercentenarians who died in this interval, while the 2000-2003 data consists of supercentenarians who were alive at the end of 1999 but died before the middle of 2003. The effects of the 1980-1999 sampling scheme are discussed below. The 2000-2003 sampling scheme leads to two kinds of biases: persons who have longer lives are more likely to be alive at any given point of time, say December 31, 1999, but on the other hand, persons with very long life are not included in the data set because they have not died before the middle of 2003. These effects are different from those caused by the 1880-1999 sampling scheme, see below. Simulations confirmed that these sampling schemes can produce qq-plots like those in Fig. 5. A further illustration of the importance of taking the sampling scheme for the IDL data into account is given by Figure 1.

In principle, the bias caused by the different sampling scheme used for the USA 2000-2003 data could be taken into account, and also this part of the data could be used. However, the information given about the sampling plan for IDL supercentenarians who died in the USA after 1999 was not sufficient to make it possible for us to do this. Hence, supercentenarians who died in the USA after December 31, 1999, have been excluded from the analysis. For similar reasons, supercentenarians who died in Japan after August 31, 2004, have also been excluded from the analysis.

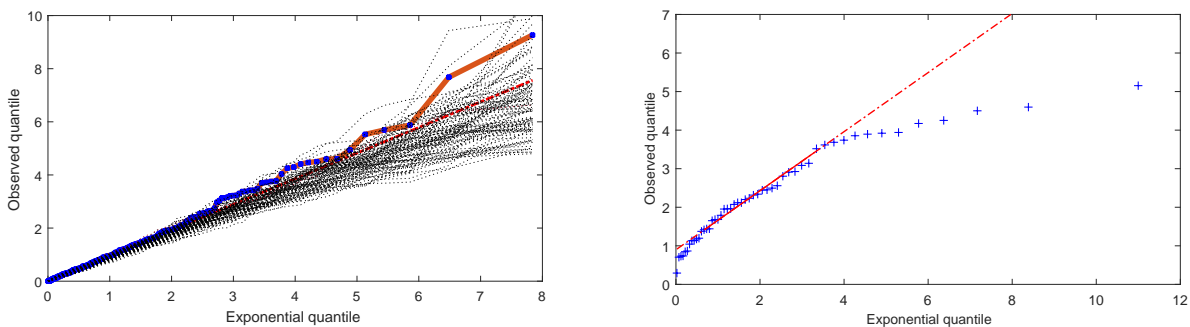


Figure 5: Illustration of effect of size-biased sampling. *Left*: Empirical quantiles for IDL supercentenarians who died 1980-1999 in USA plotted against quantiles of exponential distribution with estimated mean (red line, with observations in blue). To illustrate the statistical variation of such plots, we have simulated 100 data sets with the estimated mean for the US 1980-1999 data, and with the same 110 year birthdates and truncations, and inserted the empirical quantile lines (dotted) for these data sets in the plot. *Right*: Empirical quantiles for IDL supercentenarians who died 2000-2003 in USA plotted against quantiles of an exponential distribution with the estimated mean for IDL supercentenarians who died 1980-1999 in USA.



Additionally, for confidentiality reasons, for US supercentenarians only the year of death, and not the exact death date, is given. In the analysis we assumed that all US supercentenarian deaths occurred on July 2. However, conclusions didn't change if we instead set the death dates to January 1, or to December 31.

If the sampling scheme is that a cohort, all persons who are born in some time interval, is followed until all persons in it are dead, then there is no bias in the observed ages. Similarly, if a population is stable and there are no trends in the probability of becoming a supercentenarian, then recorded ages of supercentenarians who died in some time interval, say 1980-1999, are not subject to bias. However, the IDL database does not follow cohorts until they are extinct, and the probability of living until age 110 is increasing with time. This increase, if not taken into account, would lead to bias in the estimation of life length from the IDL data: small excess life lengths are less likely to be included in the beginning of the interval but more likely to be included in the end of the interval – and there are more deaths in the end. In the estimates and test performed here, we have taken this into account by letting the likelihood contribution from a person be conditional on the time of achieving age 110 and of death date being contained in the observation interval, as follows.

Suppose that a sample consists of all supercentenarian deaths in some country during the time interval  $(b, e)$ . Let  $\{t_i\}$  be the times of achieving age 110 and  $\{x_i\}$  be the corresponding excess ages at death. Further suppose that excess life lengths have cumulative distribution function  $F$  and probability density function  $f$ , where in our analysis  $F$  is either a GP distribution function or an exponential distribution function. Then supercentenarian  $i$  is included in the sample if one of the following two conditions is satisfied: if a)  $t_i \leq b$  and  $b \leq t_i + x_i < e$  or if b)  $t_i > b$  and  $t_i + x_i < e$ .

In case a) the excess life length of supercentenarian  $i$  is truncated so that it only is included in the sample if  $b - t_i \leq x_i < e - t_i$ . Hence the likelihood contribution from the excess life length of a supercentenarian in the sample whose 110 year birthday was before the beginning of the sampling time interval, i.e. with  $t_i \leq b$ , is

$$\frac{f(x_i)}{F(e - t_i) - F(b - t_i)}.$$

In case b) where the 110 year birthday occurred after the beginning of the sampling interval,  $t_i > b$ , the excess life length is truncated so that  $x_i \leq e - t_i$ , and the likelihood contribution from supercentenarian  $i$  is

$$\frac{f(x_i)}{F(e - t_i)}.$$

The full likelihood is then obtained by taking the product of the likelihood contributions for all supercentenarians and countries included in an analysis.

Table 2: p-values for likelihood ratio tests of no difference in mortality between women and men after age 110. Middle column assumes GP distribution, right column - exponential distribution. A “-” means that the test for exponential distribution of data rejects at the 0.01% level for the GRG data set.

ID	GP	exp
North Europe	0.94	0.81
South Europe	0.14	0.40
Europe	0.57	0.63
North America	0.72	0.56
Japan	0.77	0.76
Europe&America	0.42	0.43
World	0.43	0.41
GRG	0.17	-

Estimation using truncated and/or censored observations, such as the truncated observations in the IDL database, is of central interest in survival analysis and in analysis of failure time data, see e.g. Andersen et al. (1992) and Kalbfleish and Prentice (2002) for much more information and asymptotic theory. However, the particular truncation setting above does not seem to be considered explicitly in these books. Instead, the formulas are contained in Gampe (2010).

Uniform confidence limits for pp-plots or qq-plots for left and right truncated data do not seem to be available in the literature. To illustrate the statistical uncertainty of such plots we have instead used simulation; see Fig. 5.

Table 3: p-values for Wald tests of no difference in mortality between first and last half of data. Here “Mean” is the estimated parameter of the exponential distribution, not the mean of the observed life lengths. Tests assume an exponential distribution.

ID	Death date	#	Mean	Death date	#	Mean	p-value
North Europe	1970-1997	41	1.78	1998-2006	43	1.45	0.49
South Europe	1973-1997	50	1.61	1998-2007	64	1.19	0.26
Europe	1968-1997	91	1.70	1998-2007	107	1.29	0.18
North America	1962-1992	141	1.17	1993-2002	159	1.14	0.73
Japan	1996-2000	28	2.71	2001-2005	36	1.28	0.30
Europe&America	1962-1994	242	1.34	1995-2008	251	1.21	0.33
World	1962-1996	309	1.30	1997-2008	260	1.20	0.33

Table 4: p-values for likelihood ratio tests of no difference in mortality between groups of countries. Middle column assumes GP distribution, right column assumes exponential distribution.

ID	GP	exp
North Europe vs south Europe	0.30	0.49
Europe vs north America	0.24	0.23
Europe&America vs Japan	0.37	0.41

Table 5: Estimates of shape parameter  $\gamma$  of the generalized Pareto distribution, with 95% asymptotic confidence intervals in parentheses, and p-values for likelihood ratio test of the hypothesis that data follows an exponential distribution. N/A indicates that computation of the inverse of the Hessian was not numerically stable.

ID	Shape parameter	p-value
North Europe	0.04 N/A	0.49
South Europe	-0.04 (-0.19, 0.10)	0.19
Europe	-0.03 (-0.18, 0.11)	0.52
North America	-0.03 (-0.14, 0.09)	0.31
Europe&America	-0.03 (-0.12, 0.06)	0.18
Japan	0.15 N/A	0.47
World	-0.03 (-0.12, 0.06)	0.21

## 4 Comments on X. Dong, B. Milholland, J. Vijg, Nature 538, 257 (2016).

Figure 6, left, reproduces Figure 2.a of the Dong et al. (2016) Nature Letter, but with the yearly number of deaths of supercentenarians,  $n_t$ , added. The plot is based on IDL data for England&Wales, France, USA, and Japan. The data sets for the different countries cover different time periods, and, as a result of this, the yearly number of supercentenarian deaths in the plot varies from 0 to 42. The yearly maximum reported age follows the same pattern as the number of supercentenarian deaths, and in particular the decline in the maximum recorded age at death after 1995 follows the decline in yearly number of deaths. The fact that the yearly maximum reported age at death shows the same pattern as the yearly number of deaths is completely as expected: the maximum of many lifespans is stochastically larger than the maximum of few lifespans, and hence the maximum age is likely to be larger for years with many deaths.

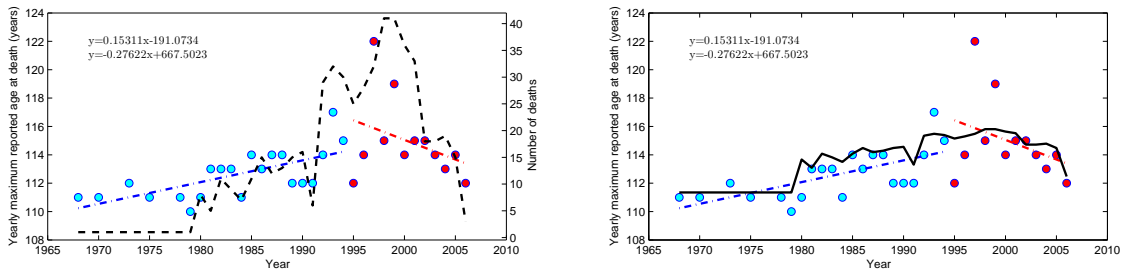


Figure 6: Yearly maximum reported age at death for supercentenarians. Combined data consisting of England&Wales 1968-2006, France 1987-2003, USA 1980-2003, and Japan 1996-2005. Dashed - dotted lines: blue regression lines for deaths 1968-1994, red regression line for deaths 1995-2006. *Left*: Dashed line is yearly number of deaths,  $n_t$ . *Right*: Solid line is  $110 + \text{mean of maximum of } n_t \text{ exponential variables with } \sigma = 1.35$ .

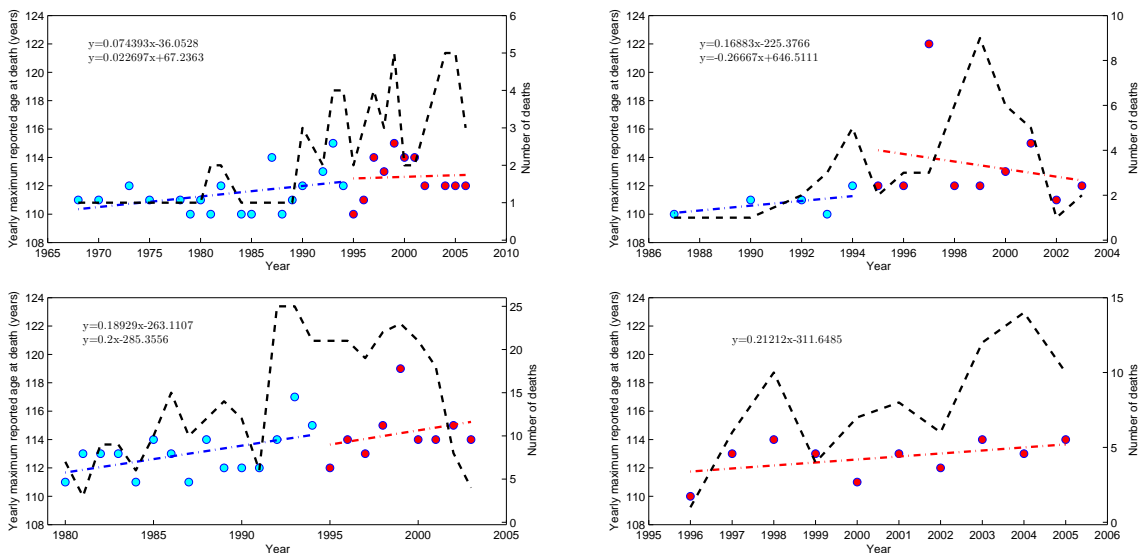


Figure 7: Yearly maximum reported age at death for supercentenarians. Dashed - dotted lines: blue is regression lines for deaths 1968-1994, red regression line for deaths 1995-2006. Dashed lines are yearly number of deaths. *Top left*: England&Wales, *Top right*: France, *Bottom left*: USA, and *Bottom right*: Japan.

The right plot in Fig. 6, instead of  $n_t$ , adds the mean of the maximum of  $n_t$  independent exponential variables, with parameter 1.35 estimated from these countries. This does not take truncation into account, but still, again, as expected, the mean and the regression lines agree well. Fig. 7 shows the same plots as in Fig. 6, left, done separately for individual countries. There is no evidence of a trend break in these plots.

Thus, in conclusion, the apparent trend break in Fig. 2.a in Dong et al. (2016) is an artifact caused by inappropriate combination of data from different time periods.

Fig. 2.b of Dong et al. (2016) adds the 2nd to 5th highest reported age at death to Fig. 2.a. The pattern is the same as in Fig. 2.a, and the explanation is the same: inappropriate combination of data from different time periods. Further, the statement in Dong et al. (2016) that “the annual average age at death for these supercentenarians has not increased since 1968 (Fig. 2.c)” does not imply that there is a limit. Again: records increase as more attempts to break them are made, even without a change in the underlying distribution. The conclusion “our data strongly suggest that the duration of life is limited” in Dong et al. (2016) is based on wrong and misleading analysis.

## 5 Discussion

As shown above, available data does not exhibit any statistically significant differences in survival at extreme age between women and men; between persons with different lifestyles or genetic backgrounds; between different time periods; or between different ages, say between 110-year-olds and 115-year-olds. Further, sample sizes are large enough that differences bigger than 5% - 10% (depending on the sample sizes in the individual tests) in yearly survival probabilities would be likely to be detected. These results are surprising and remarkable and can inform the search for demographic or biological theories of aging. In particular, the fact that lifestyle factors, which are important for survival at younger ages, ceases to play a role after age 110 is of both biological and popular interest.

Box 1 of Vaupel (2010) gives an introduction to the important explanation of mortality at high age as resulting from a mixture of subpopulations with different frailty. Presumably the composition of subpopulations of humans reaching 110 years of age differs, at least somewhat, between persons who lived earlier and who lived later, or between countries. If the frailty hypothesis is correct, mortality should then be different in at least some of the countries or in one of the time periods. However, we did not find any such differences. This weakens the case for the frailty explanation. A fundamental hypothesis on how we age is that “the rate at which the chance of death increases with age for humans is a basic biological constant, very similar and perhaps invariant across individuals and over time”, see Vaupel (2010). For mortality after 110, this would mean that the distribution of excess life length in the future should still be exponential, but with lower yearly probability of death. The methods developed in this paper provide an efficient way of checking if this indeed is the case: power calculations show that an increase of 5% or more in yearly survival in a new data set of the same size as the IDL data would be detectable.

Substantial efforts to find “a cure for aging” and in “engineering better humans” with the aim of extending the length of human life, perhaps indefinitely, are underway, see e.g. Vijg and Campisi (2008), Longo et al. (2015), Häggström (2016). Success of such efforts could happen either in a dramatic and obvious way, or gradually. In the latter case the results of this paper, together with similar analyses of data to be collected in the future, will aid early confirmation of success of the efforts.

Finally, as in any analysis of the human lifespan, conclusions are based on now existing data, and may be modified if more data becomes available. In particular, the IDL data set only includes 9 persons who lived longer than 115 years, so data is sparse above this age. However, also these 9 data points agree well with our conclusion that human life is unbounded but short.

## Supplementary materials

[LATool](#) - a MATLAB toolbox for life length analysis which makes it possible to obtain more detailed results and do alternative analyses. Available at [www.zholud.com](http://www.zholud.com).

## Acknowledgement

We thank Anthony Davison, Jutta Gampe, Olle Häggström, Peter Jagers, Niels Keiding, Thomas Mikosch and Olle Nerman for comments. Research supported by the Knut and Alice Wallenberg Foundation, grant KAW 2012.0067.

## References

- Aarssen, K. and L. de Haan (1994). On the maximal life span of humans. *Mathematical Population Studies* 4, 259–281. 2
- Andersen, P., O. Borgan, R. Gill, and N. Keiding (1992). *Statistical models based on counting processes*. Springer Verlag, New York. 10
- Antero-Jacquemin, J., G. Berthelot, A. Marck, P. Noirez, A. Latouche, and J.-F. Toussaint (2014). Learning from leaders: Life-span trends in olympians and supercentenarians. *J Gerontol A Biol Sci Med Sci* 70, 1–6. 2
- Beirlant, J., Y. Goegebeur, J. Segers, and J. Teugels (2004). *Statistics of Extremes: Theory and Applications*. John Wiley & Sons. 2
- Coles, S. G. (2001). *An Introduction to Statistical Modeling of Extreme Values*. Springer. 2
- Couzin-Frankel, J. (2011). A pitched battle over life span. *Science* 333(8), 549–550. 1
- Danilova, D. and J. R. Magnus (2004). On the harm that ignoring pretesting can cause. *J. Econometrics* 122. 6
- Dong, X., B. Milholland, and J. Vijg (2016). Evidence for a limit to human lifespan. *Nature* 538, 257–259. 1, 2, 11, 12
- Gampe, J. (2010). Human mortality beyond age 110. In H. Maier and et al. (Eds.), *Supercentenarians*, Chapter 13, pp. 219–230. Heidelberg: Springer-Verlag. 2, 6, 10
- GRG (2016). Gereontology research group list of validated deceased supercentenarians. URL: [www.grg.org](http://www.grg.org). 2
- Häggström, O. (2016). *Here be dragons, science, technology and the future of humanity*. Oxford University press. 12
- HMD (2016). Human mortality database. URL: [www.mortality.org](http://www.mortality.org). 7
- IDL (2016). International database on longevity. URL: [www.supercentenarians.org](http://www.supercentenarians.org). 2, 5
- Kalbfleish, J. D. and R. L. Prentice (2002). *The statistical analysis of failure time data*. Wiley, Hoboken New Jersey. 10
- Longo, V. D., A. Antebi, A. Bartke, N. Barzila, H. M. Brown-Borg, C. Caruso, and T. J. Curiel (2015). Interventions to slow ageing in humans: are we ready? *Aging Cell* 14, 497–510. 12
- Mayo, D. G. and D. R. Cox (2006). *A Frequentist Statistics as a Theory of Inductive Inference*. in Optimality: The Second Erich L. Lehmann Symposium. Vol. 49, Lecture Notes-Monograph Series, Institute of Mathematical Statistics. 6
- Poulain, M. (2010). On the age validation of supercentenarians. In H. Maier and et al. (Eds.), *Supercentenarians*, Chapter 1, pp. 4–30. Heidelberg: Springer-Verlag. 2
- Thatcher, R. A. (2010). The growth of high ages in England and Wales, 1635–2106. In H. Maier and et al. (Eds.), *Supercentenarians*, Chapter 11, pp. 191–201. Heidelberg: Springer-Verlag. 7
- Vaupel, J. W. (2010). Biodemography of human ageing. *Nature* 464(25), 536–542. 2, 12
- Vijg, J. and J. Campisi (2008). Puzzels, promises, and a cure for ageing. *Nature* 544, 1065–1071. 12
- Weon, B. M. and J. H. Je (2009). Theoretical estimation of maximum human lifespan. *Biogerontology* 10, 65–71. 2
- Wilmoth, J. R., L. Deegan, H. Lundstrom, and S. Horiuch (2000). Increase of maximum life-span in Sweden, 1861–1999. *Science* 289, 2366–2368. 2